

Value Proposition

- Desktop commercial lines underwriting
- Data throughout the operations' lifecycle
- Risk control
- Litigation tools

Funding Stage

- Self-funded – Growth Capital
- \$4M invested to date by the Founder

Funding Requirement

- \$4.3M

Use of Funds

- Operations & Marketing
- People
- Technology

Leadership

- Javid Vahid, Founder
- Azita Vahid, Co-Founder-Treasurer
- Farahmand Kalayeh, Chief Commercial Officer

Legal

- Ben Wiles - LKP Global

USPTO

- Patent# 10,096,003

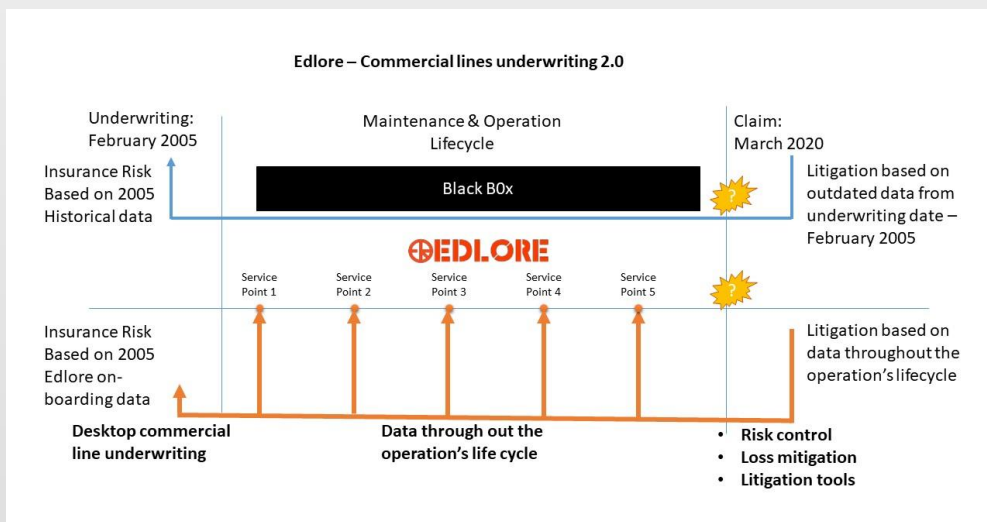
Contact Information

Javid Vahid PE - CEO

(949)690-2245

Javid@edlore.com

The Big Picture



Problem and Opportunity

The commercial lines insurance today is dependent on data given by the customer at the time of underwriting and blind to the operations until a claim is filed resulting significant increase in insurance industry risk and losses.

Edlore patented software platform using the latest technologies such as 3D/AR, AI and ML tools, and gives underwriters real-time access to critical maintenance data throughout the lifecycle of operations, with a much clearer view and control of the underwriting risks and lower claims cost using the Edlore Operability Score EOS™. This is a score that can help determine risk factor of a customer for insurance.

Product

Edlore is comprised of a 3D/AR engine for step by step assistance for field service operations and asset lifecycle management, parts identification and purchase. Data visualization, real-time remote expert video chat, animations, troubleshooting wizard, document management and more.

Business Model

SaaS, Licensing, Subscription

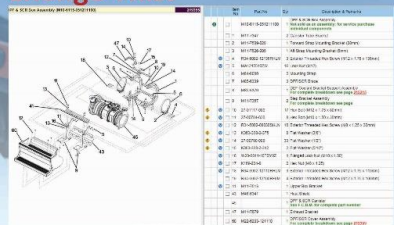
Sales/Marketing Strategy

Our goal is to position Edlore as an added value services for major commercial lines insurance and their customers.

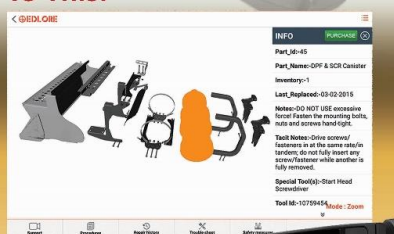


We Make Paper Manuals Smart

Change This:



To This:



WE ARE THE BRIDGE TO BRING TODAY'S UNCONNECTED WORLD, TO TOMORROW'S CONNECTED WORKERS